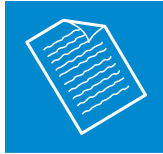


Cheshire West & Chester Council

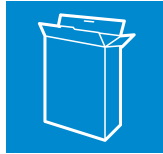
Your quick start guide

What goes where?

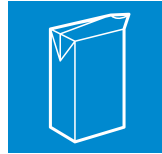
Black recycling bin with blue lid



Paper



Cardboard



Beverage cartons



Corrugated cardboard

Black recycling bin with red lid



Mixed glass bottles and jars



Household plastic packaging

(including black packaging)



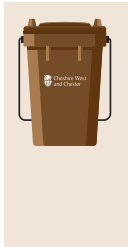
Household metal packaging



Food waste



Food waste



Other materials

Please place these items out for collection alongside your new recycling bins in a sturdy box or plastic bag.

Top Tip - Why not reuse your old recycling boxes?



Spectacles



Cooking oil



Batteries



Small appliances



Mobile phones

For information on how to dispose of other items please refer to your A4 service booklet or visit: cheshirewestandchester.gov.uk/bincollection



Scan here for full list of materials

From boxes to bins it's clean, easy, green

What goes out when?



Place all containers out
by **7am** on your
scheduled collection day.



**Your collection day will
not change.**

Place your new recycling
containers out for collection
on the alternate week to your
household waste container.



Chargeable garden waste service

If you subscribe to the garden waste
collection service you will receive a permit
and information on when your green garden
waste bin will be emptied.